

GROUP-GL INTERNATIONAL



RINGLAAN 32
3530 HOUTHALEN-HELCHTEREN
BELGIUM

Tel +32 11 398200

Fax +32 11

Email info@group-gl.com

[www Group-gl.com](http://www.Group-gl.com)

Contact person Belgium: Jan Goossens

Mobile: +32 475 906550

Email: jan.goossens@group-gl.com

Contact person Hungary: Angela Kovacs

Mobile: +36 30 6302698

Email: a.kovacs@gruop-gl.hu

FOR SALE / INDUSTRIAL PLOT - HATVAN

ADDRESS: HATVAN, HRSZ. 760/5, HUNGARY

SURFACE: 10 HA

CONFIGURATION: REGULAR PIECE OF LAND

Situation Location

AAA

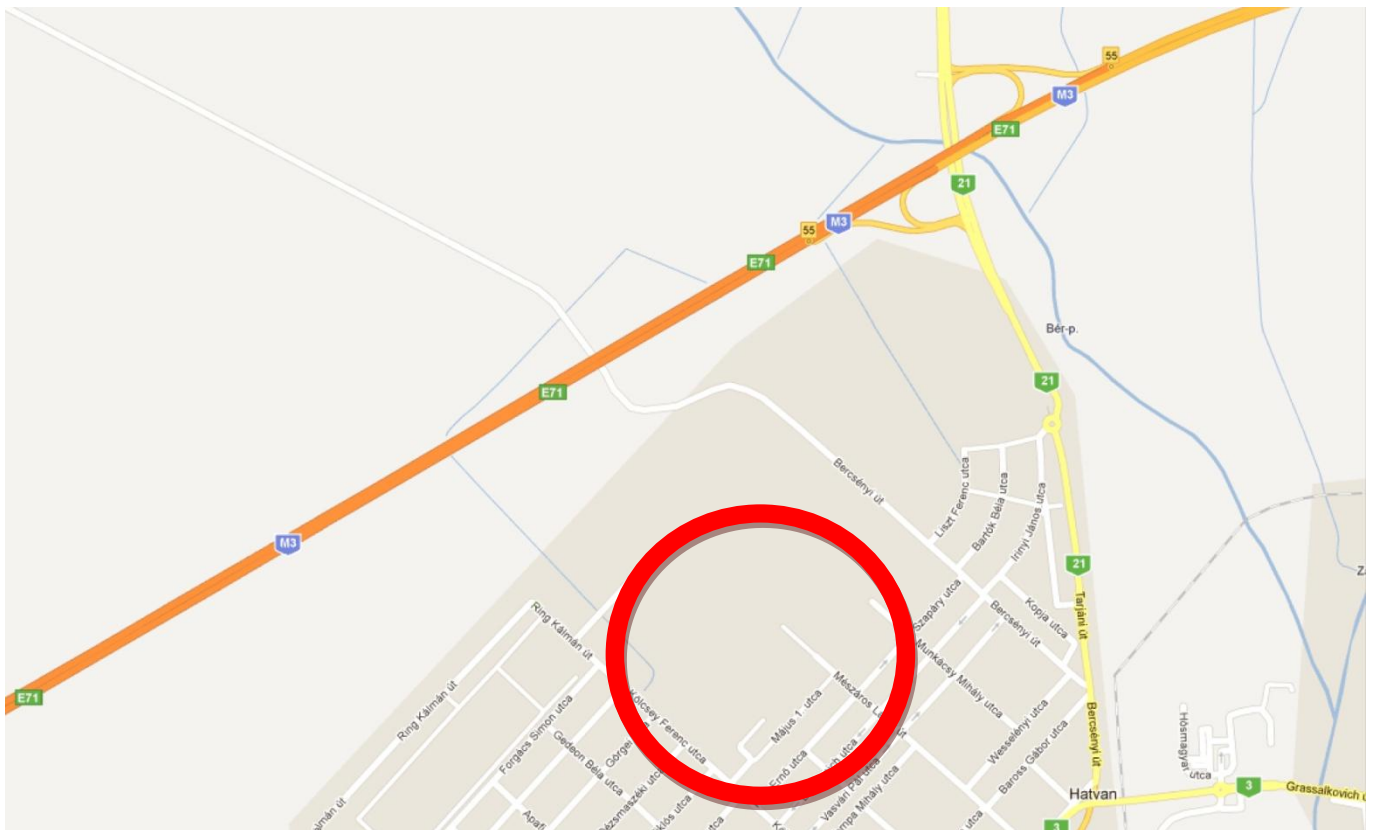
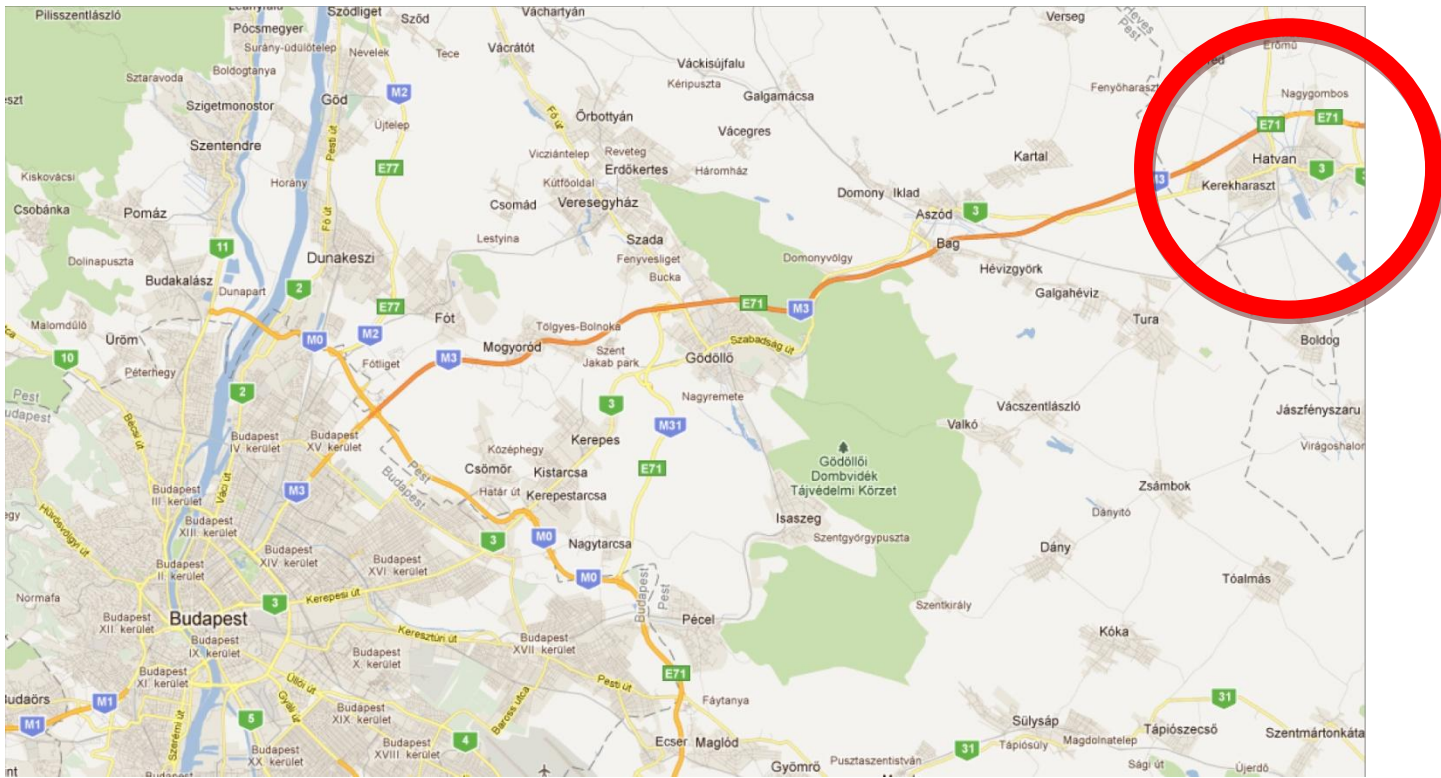
55 kilometres outside Budapest

Along the M3 motorway (*direction Ukraine*) / new motorway in perfect condition

Easy accessibility (*just near to the aforesaid motorway*)

Just in front of the Hungarian Bosch factory *Horváth Intertransport / ...*)

Several other semi industrial establishments (*leoni,*



HELYSZÍNRAJZ

760/5
helyrajzi

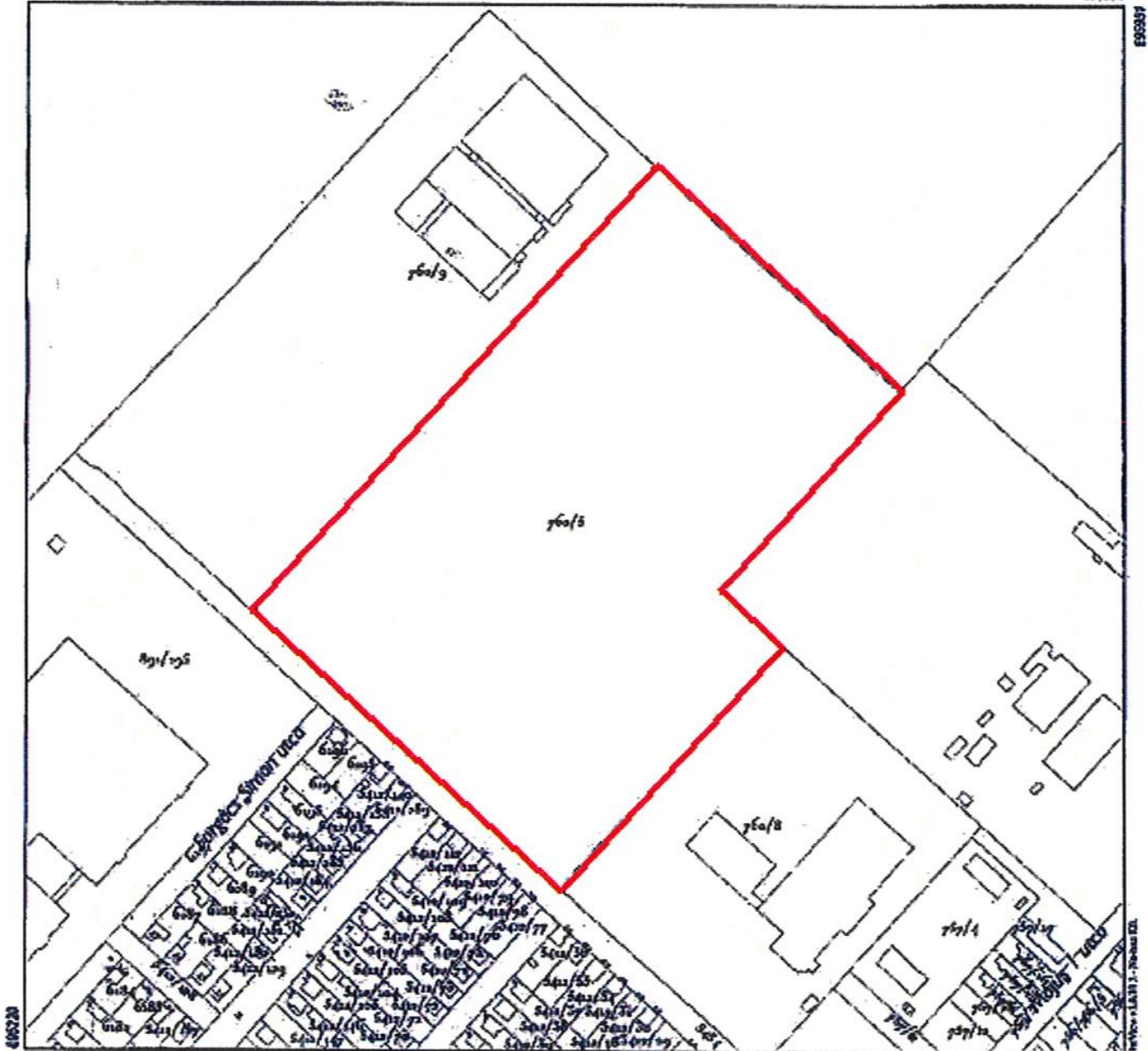
Adatszolgáltatás a
314/2009
iktatószám alapján.



NEMZETI KATASZTERES PROGRAM
GEMÉLŐ TULAJD.

76-344-242

253254



1:4000



Hatvan, 2009 MÁRCIUS 09 11:09



A térkép elkészítése csak a tulajdonos Nemzeti Kataszteri Programon keresztül történő engedélyével lehetséges!

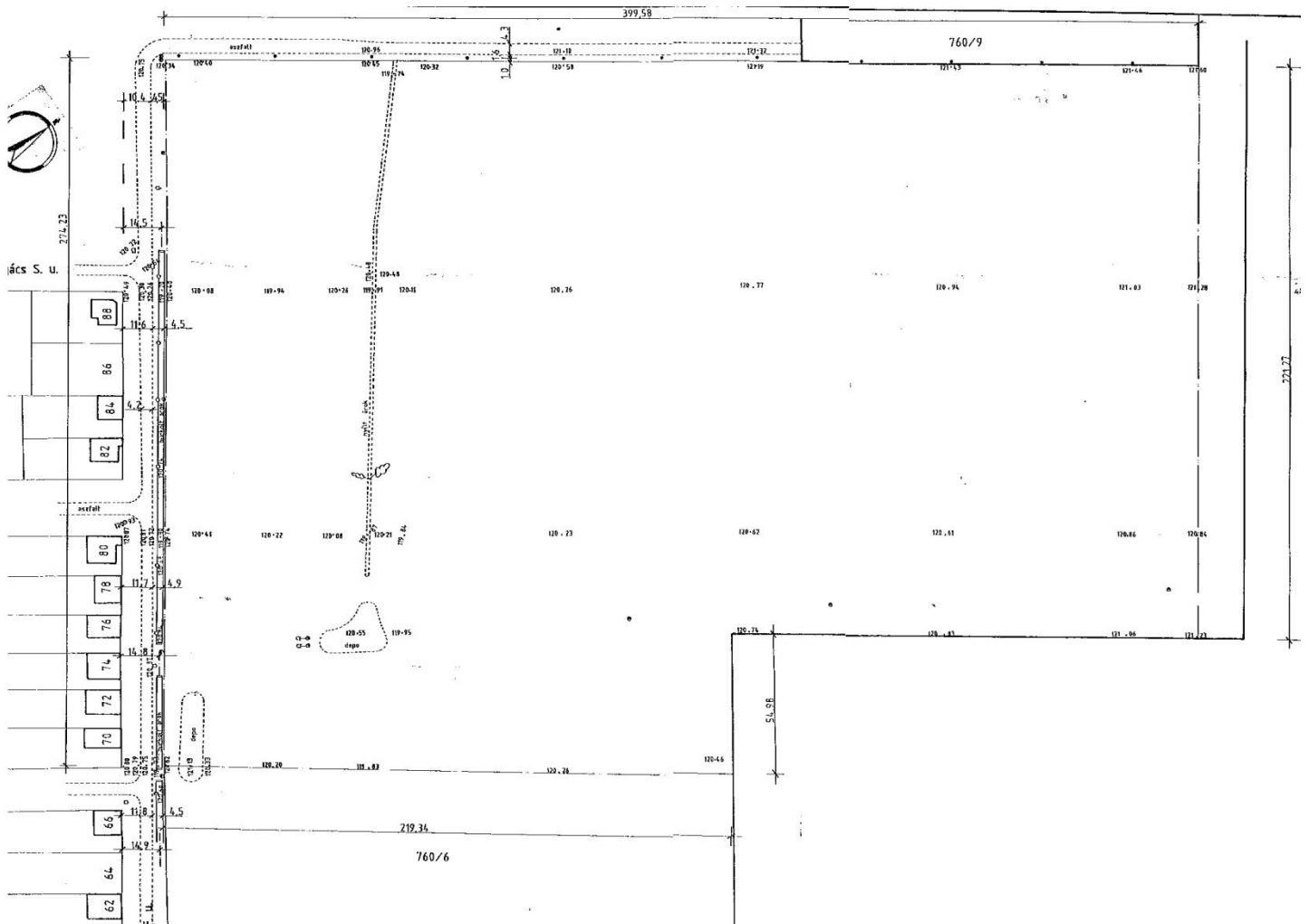
Asset

Multifunctional destination possibilities:

- INDUSTRIAL
- SEMI INDUSTRIAL
- STORAGE
- OTHERS

Development:

- Possibility to parcel out in view of several smaller developments
- Area suitable for building equals 41.186 Sqm
- Specific regulations with regard to the height of the constructions:
 - Max. 9 meters height till 60 meters from the building line
 - Max. 12 meters height as from 60 meters from the building line



Ground Plan